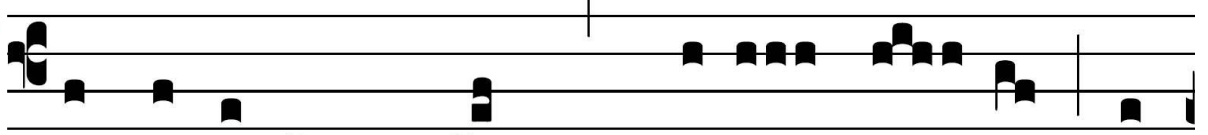




ANTIPHONA AD INTROITUM



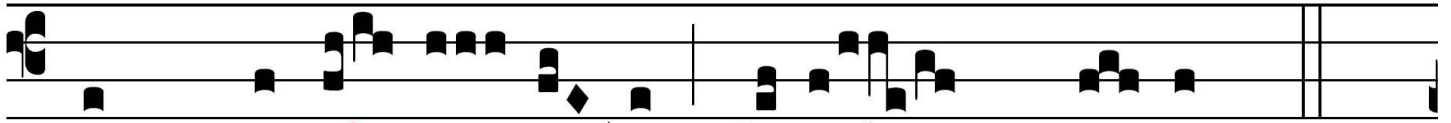
Intr.
2.



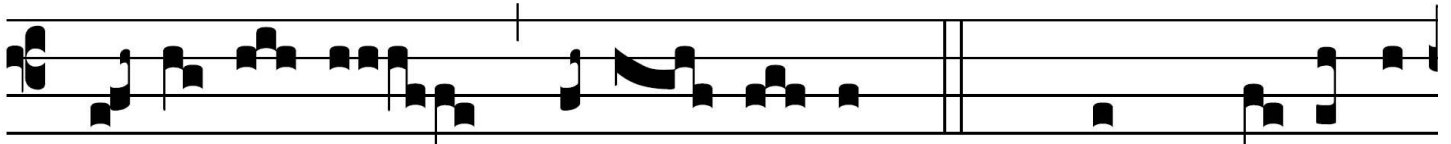
ERRÍ-BI-LIS est * locus i- ste: hic



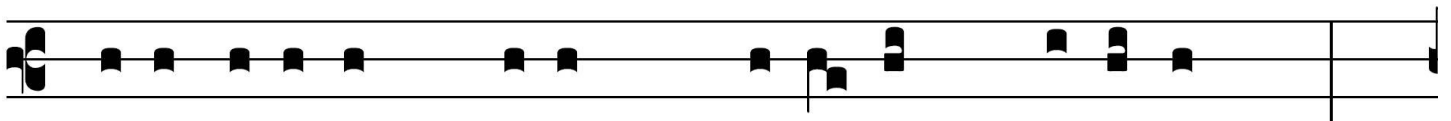
do-mus De- i est, et porta coe-li:



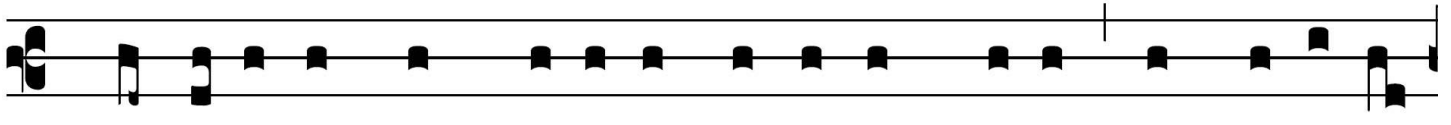
et vo-cá- bi- tur au-la De- i. T. P.



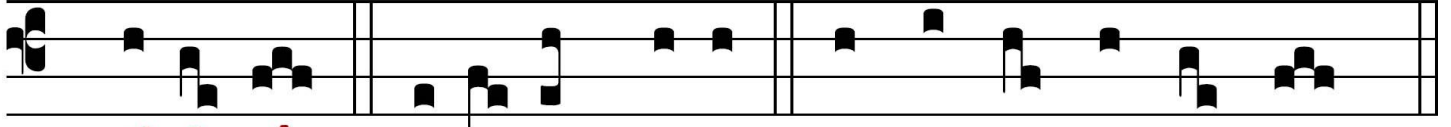
Al-le-lú- ia, alle- lú- ia. Ps. Quam dí- lécta



tabernácu- la tu- a, Dómi- ne virtú- tum! *



p ✓ / / / / ✓ - - - ✓ - - - / *p*
concupíscit, et dé-fi-cit á-ni-ma me-a in átri-a



p *p* ✓
Dómi-ni. Gló-ri-a Patri E u o u a e