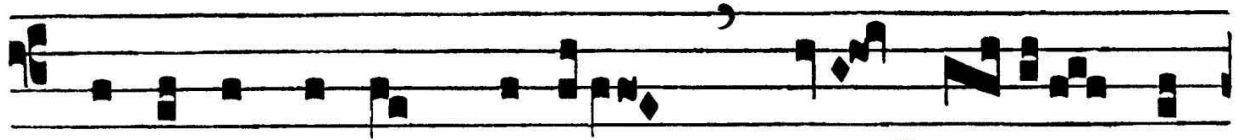


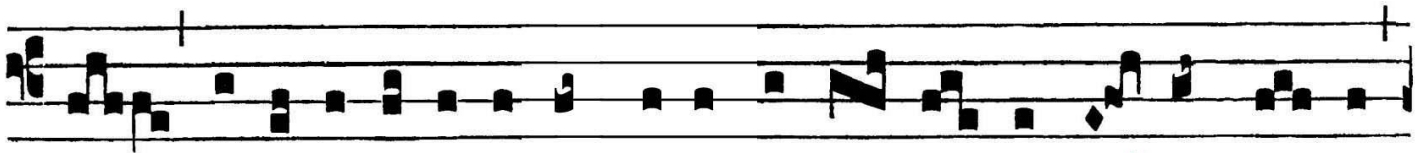
ANT. AD OFFERTORIUM

II

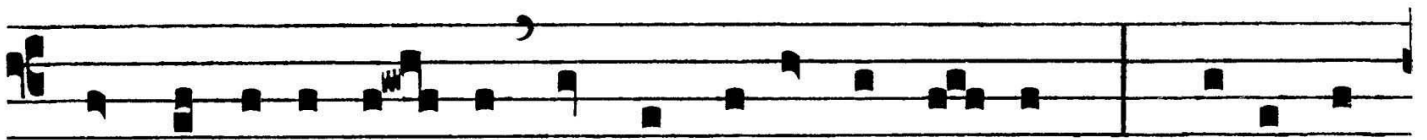


D

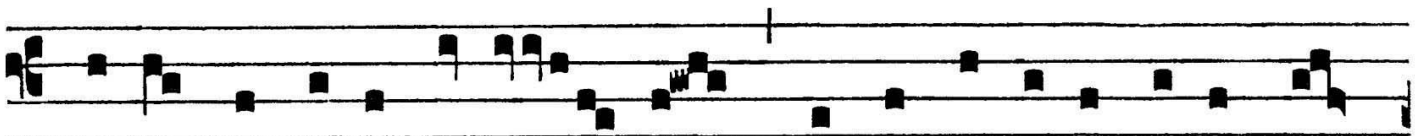
1 ✓ - - 1 - ✓ 1 ✓ 1 ✓ 1 ✓ 1 ✓
Omi-ne Ie-su Christe, Rex gló- ri-



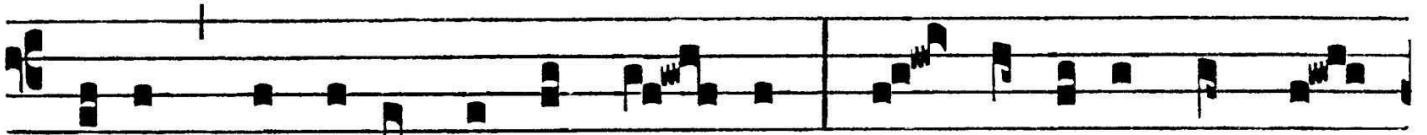
1 1 1 ✓ - ✓ - - 1 1 1 - 1 ✓ 1 5 -
ae, lí-be-ra á-nimas ómni-um fi-dé- li- um de-functó- rum



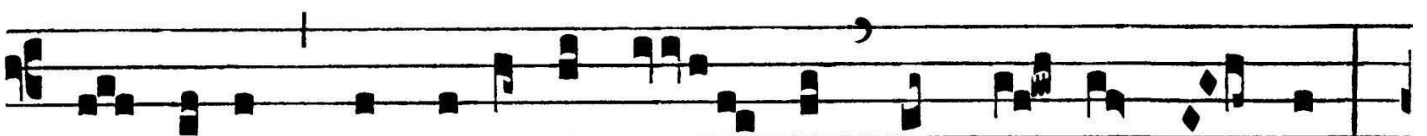
p ✓ - - cant - 1 - 1 p 1 5 - 1 - 1
de poénis infér- ni, et de pro-fúndo la- cu : lí-be- ra



1 1 - 1 - 1 1 1 - cant - 1 1 1 - 1 - 1
e- as de o-re le- ó- nis, ne absórbe- at e- as tár-



1 - - - p 1 ✓ cant - cant p ✓ - p cant
ta-rus, ne cadant in obscú- rum: sed sígni-fer sanctus



1 ✓ - - - p ✓ 1 1 - ✓ 1 1 1 p 1 -
Mí-cha-el repraeséntet e- as in lu- cem san-ctam :



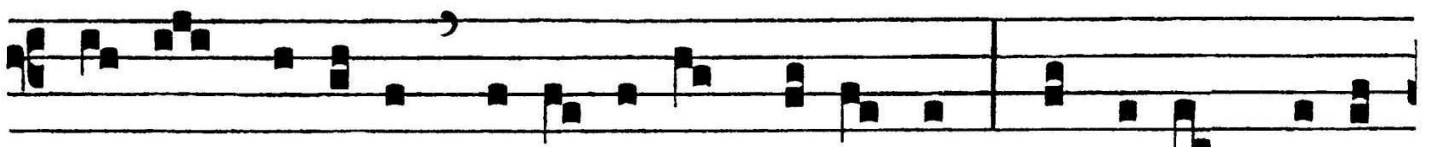
* Quam o-lim Abrahæ promi- sísti, et sé-



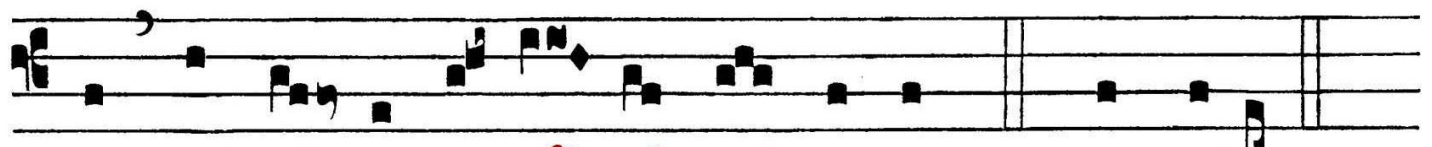
mi- ni e- ius. ∇ . Hósti- as et pre-ces ti-bi Dómi- ne



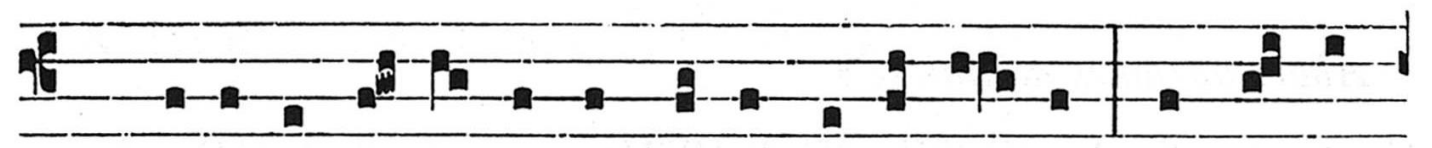
laudis of-fé- rimus : tu súsci-pe pro a-nimábus il- lis,



qua- rum hó-di- e memó- ri- am fá-ci-mus : fac e- as, Dómi-



ne, de mor- te transí- re ad vi- tam. * Quam o-lim.



∇ . 2. Animæ e- ó- rum in bo- nis demo-rén- tur et se- men



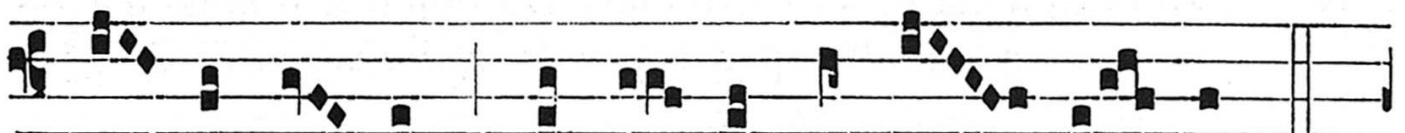
e- ó- rum possí-de- at terram. * Quam olim. **∇. 3.** A-



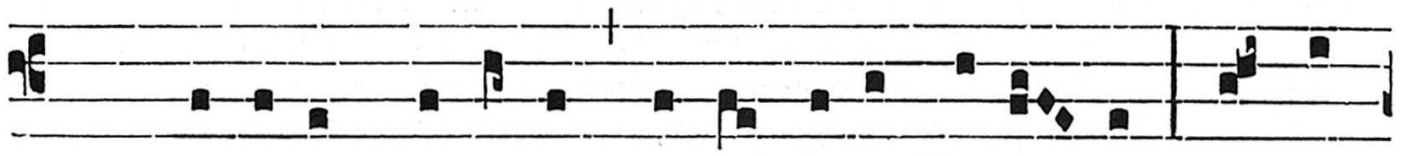
nimae fi- dé- li- um, quas assum-psi-sti, Dó-mi-ne, fac



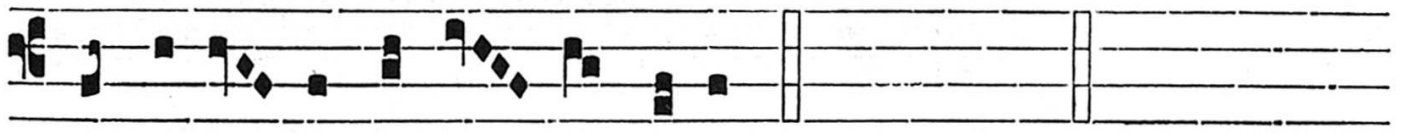
gaudé-re cum sanctis tu- is in gló- ri- a et lí-



be- ra e- as de lo- cis tormen- tó- rum.



∇. 4. Réqui- em ae-térnam do-na e- is Dómi- ne : et lux



perpé-tu- a lú-ce- at e- is. * Quam olim.