



# ANTIPHONA AD INTROITUM

**R** Espi-ce, Dó-mi-ne, in te-stamén-tum tu-um,

et á-nimas páupe-rum tu-ó-rum ne de-re-lín-quas in

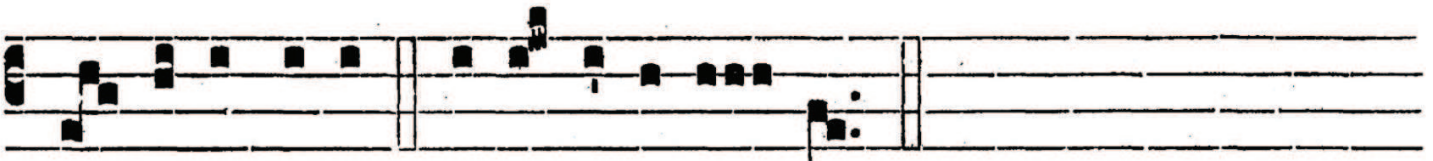
fi-nem : exsúr-ge Dó-mi-ne, et iú-di-ca cau-sam

tu-am : et ne obli-viscá-ris vo-ces quaerén-

ti-um te. Ps. Ut quid De-us re-pu-lísti in fi-nem :



*^* *✓* - - - - *✓* - - - - *u* / - *'''* *^*  
i- rá-tus est fu-ror tu-us super oves páscu-ae tu- ae?



Gló- ri- a Patri. E u o u a e.