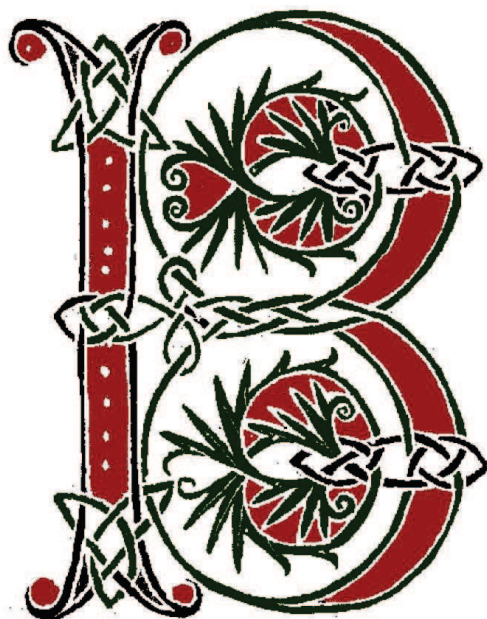




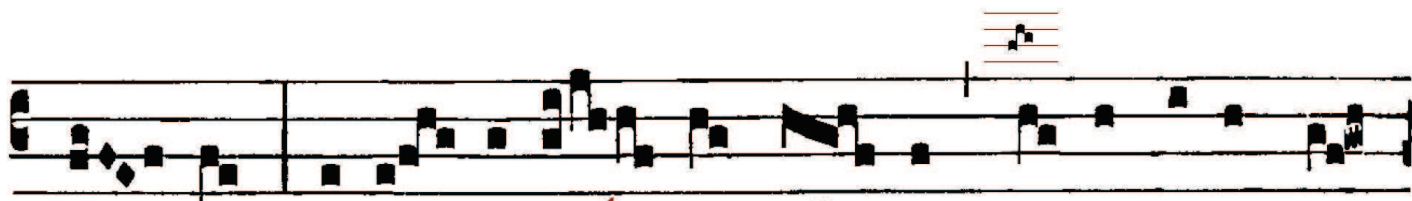
ANTIPHONA AD INTROITUM



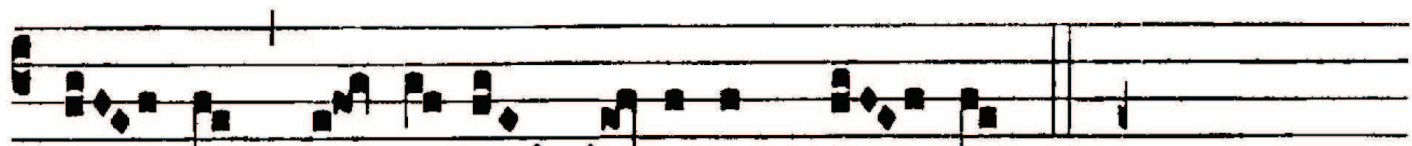
ENEDI-CTA sit san-cta Trí-



ni-tas, at-que indi-ví-sa U-



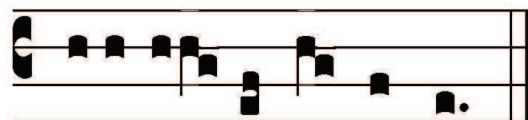
ni-tas : confi-té-bi-mur e-i, qui-a fe-cit no-



bís-cum mi-se-ri-cór-di-am su-am.



Ps. Dómine DÓ-minus noster: * quam admi-rá-bi-le est nomen tuum



in u-ni - vérsa ter-ra.