



ANT. AD COMMUNIONEM

CO. VI



D

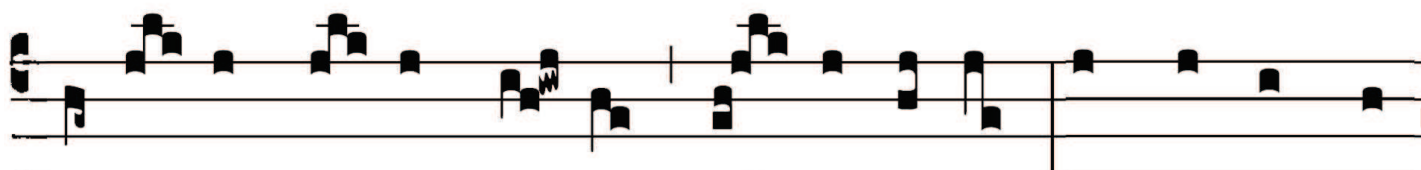
I-cit Dó- mi- nus : Implé-te hýdri- as a-



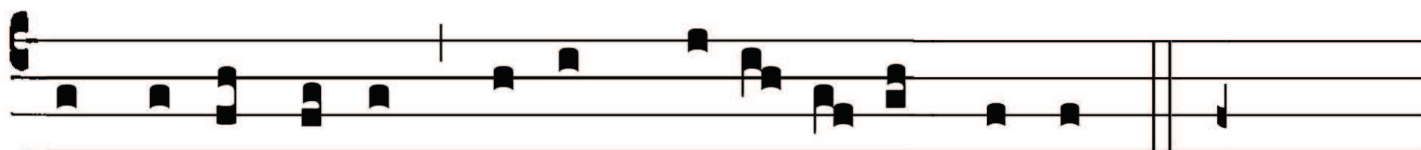
qua et ferte architri-clí- no. Cum gu- stás- set archi-



tri- clí- nus aquam vi-num fa-ctam, di- cit sponso :



Servá-sti vi- num bo- num us-que adhuc. Hoc signum fe-



cit Ie-sus primum co-ram discí-pu- lis su- is.